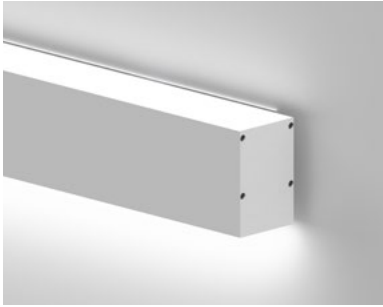
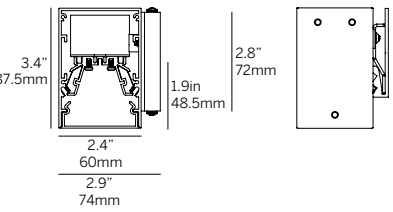


60 Linear Wall Mount Direct or Indirect

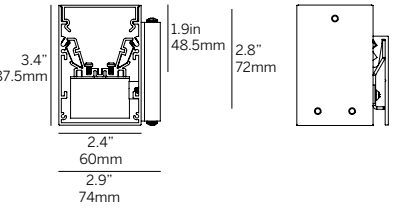


Ordering Information

Model	Fixation	Pattern	Length	Direct or Indirect*	Finish
WG-60LD-S direct WG-60LI-S indirect	SW	S P ¹ PZ ¹	A A x B A x B x C A x B x A x B	Specify options using chart below* See examples: ex: L1 - D010 - SD ex: M3 - S - SD	W (std) B G F



Direct (LD)



Indirect (LI)

Luminaire

- Direct or indirect continuous, evenly illuminated snap-in lens without visible LED pattern.
- Standard Opal Diffuser for even illumination, Satin Diffuser for high efficiency and minimal LED appearance.
- Field replaceable LED boards.
- 90+ CRI, 3 steps MacAdam.
- Lengths and angles factory cut to exact field dimensions.
- Standard and custom corners.
- Powder coat painted white - RAL 9010.

Fixation

- SW = Surface Wall Mount

Pattern

- S = Straight run
- P = Standard patterns 2, 3 or 4 sided with 90° corners on the same plane¹
- PZ = Non-standard patterns and/or corners other than 90° on multiple planes, consult factory¹

Length

- A, B, C = specify inches to the nearest 0.25" (i.e. 72"). For patterns specify each length (i.e. 2 sided: A x B = 72" x 48"; 3 sided: A x B x C; 4 sided: A x B x A x B).

Power²

- L = 3.2W/ft low power (24V)
- M = 6.4W/ft mid power (24V)
- H = 10.5W/ft mid power (24V)

CRI/CCT³

- 90+ CRI (low/mid/high power)
- 927 = 2700K, (173/321/478 lm/ft)
- 930 = 3000K, (179/331/493 lm/ft)
- 935 = 3500K, (183/337/503 lm/ft)
- 940 = 4000K, (184/341/508 lm/ft)

Driver (integral)⁴

- X = No driver, ordered separately
- S = Standard driver 120-277V
- D010 = Osram, 10%, 0-10V dimming, 120-277V
- L3DAE = Lutron Hi-lume 1% EcoSystem, 120-277V
- L3DOE = Lutron Hi-lume Premier 0.1 EcoSystem, 120-277V
- DFPN = Lutron Forward Phase 1% 120VAC

Lens

- OD = Satin opal diffuser (standard)
- SD = Satin clear diffuser (high efficiency)

Finish

- W = White, 20% gloss, RAL9010 (standard)
- B = Black, 20% gloss
- G = Gray, 20% gloss
- F = Custom finished trim, specify RAL

Emergency

- Emergency LED driver available, order separately.

*Direct or Indirect Specify one from each

- ex 1: - L1 - D010 - SD
- ex 2: - M3 - S - SD

Power/CRI/CCT	Driver ⁴			Lens
	L	M	H	
	X	X	X	OD
927	L1	M1	H1	SD
930	L2	M2	H2	D010
935	L3	M3	H3	L3DAE
940	L4	M4	H4	L3DOE
				DFPN

¹ See pattern specsheet.
² Wattage shown does not include power supplies/drivers.
³ Delivered lumens with satin opal diffuser shown for one direction.
⁴ Remote power supply required. See power supply page for details.

