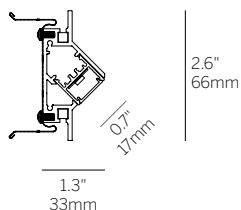


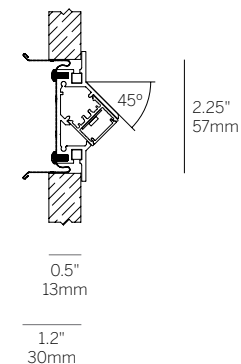
20 Linear Floor Wash Semi-Recessed Bezel Trim



Ordering Information								
Model	Fixation	Pattern	Length	Power ¹	CRI/CCT ²	Driver ³	Lens	Finish
WG-20LFW	SRBT	S						
WG-20LFW	SRBT	S	A	L M	927 930 935 940	X S D010 L3DAE L3DOE DFPN	OD (std) SD	W (std) B G F



Semi Recessed Bezel Trim (SRBT)



Gypsum Wall

Luminaire

- Continuous, evenly illuminated snap-in lens without visible LED pattern.
- Standard Opal Diffuser for even illumination and no LED appearance. Satin Diffuser for high efficiency and minimal LED appearance.
- Field replaceable LED boards.
- 90+ CRI, 3 steps MacAdam.
- Lengths factory cut to exact field dimensions.
- Powder coat painted white - RAL 9010.
- Supplied with 4' class 2 plenum rated feed cable per fixture lengths.

Fixation

- SRBT = Semi Recessed Bezel Trim

Pattern

- S = Straight run

Length

- A = specify inches to the nearest 0.25" (i.e. 72.25")

Power¹

- L = 3.2W/ft low power (24V)
- M = 6.4W/ft mid power (24V)

CRI/CCT²

- 90+ CRI minimum (Low/Mid)
- 927 = 2700K (188/348 lm/ft)
 - 930 = 3000K (194/359 lm/ft)
 - 935 = 3500K (198/366 lm/ft)
 - 940 = 4000K (200/370 lm/ft)

Driver (remote)⁴

- X = No driver, ordered separately
- S = Standard driver 120-277V
- D010 = Osram, 10%, 0-10V dimming, 120-277V
- L3DAE = Lutron Hi-lume 1% EcoSystem, 120-277V
- L3DOE = Lutron Hi-lume Premier 0.1% EcoSystem, 120-277V
- DFPN = Lutron Forward Phase 1%, 120VAC

Lens

- OD = Satin opal diffuser (standard)
- SD = Satin clear diffuser (high efficiency)

Finish

- W = White, 20% gloss, RAL9010 (standard)
- B = Black, 20% gloss
- G = Gray, 20% gloss
- F = Custom finished trim, specify RAL

Emergency

- Emergency LED driver available, order separately (remote)

1 Wattage shown does not include power supplies/drivers.

2 Delivered lumens with satin opal diffuser shown.

3 Remote power supply required. See power supply page for details.