

4" ProTools D Downlight

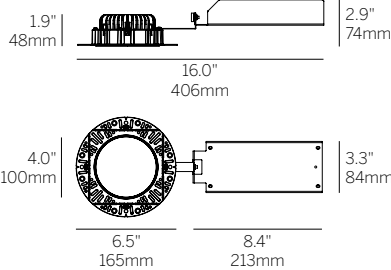
Round Flush Diffuser



Recessed Plaster Trim

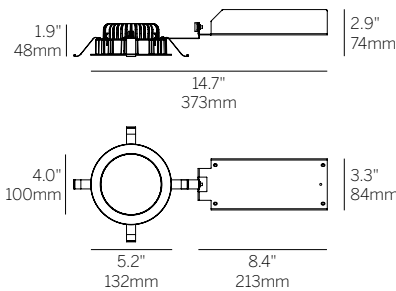


Recessed Bezel Trim



Cut Out: Ø 4.75"

Recessed Plaster Trim (RPT)



Cut Out: Ø 4.75"

Recessed Bezel Trim (RBT)

Ordering Information

Model	Fixation	Power ^{1,2}	CRI/CCT	Driver ⁴	Lens	Beam	Finish	Options
WG-100RPTD	RPT RBT	L M H	927 930 935 940	X S D010 PEQ1 PEQ0 DFPN	FROD	LAM	W G	LP CP IC

Luminaire

- 4" round aperture downlight for wide distribution ambient lighting.
- High angle distribution for good vertical illumination.
- High transmission, evenly illuminated Flush Satin Opal Lens.
- Luminaire and driver installed and maintained from below the ceiling.
- Minimum of 5.5" (127mm) ceiling void is required to install the fixture from below the ceiling (integral driver).
- Modular interchangeability throughout the entire ProTools range of products.

Fixation

- RPT = Recessed Plaster Trim
- RBT = Recessed Bezel Trim

Power^{1,2}

- L = Low Power, 5.5W @ 350mA
- M = Mid Power, 8W @ 500mA
- H = High Power, 11.4W @ 700mA

CRI/CCT³

- 90+ CRI (Low/Medium/High Power)
- 927 = 2700K, (759/1074/1488 lm)
 - 930 = 3000K, (771/1092/1512 lm)
 - 935 = 3500K, (795/1128/1566 lm)
 - 940 = 4000K, (834/1188/1638 lm)

Driver⁴

- X = Remote driver, ordered separately
- S = Standard non-dim driver, 120-277V
- D010 = EldoLED, 1%, 0-10V Driver, 120-277V
- PEQ1 = Lutron Hi-lume 1% EcoSystem, 120-277V
- PEQ0 = Lutron Hi-lume Premier 0.1% EcoSystem, 120-277V
- DFPN = Lutron Forward Phase 1% 120VAC

Lens

- FROD = Flush Round Satin Opal Lens

Beam

- LAM = Lambertian

Finish

- W = White
- G = Gray

Options

ProTools downlights require no additional options kits for remodel & new construction

- LP = Landing Pan
- CP = Chicago Plenum Housing
- IC = IC/NC Housing

¹ Other lumen packages available, consult factory.

² See LED data sheet for delivered lumens.

³ Wattage shown does not include power supplies/drivers. System wattage adds 10-20%.

⁴ See power supply page for details.