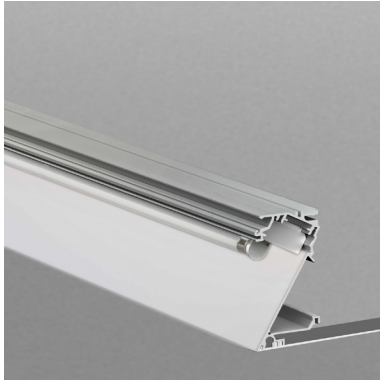


Project Title: .....

Luminaire Ref: .....



plaster-in

### Ordering Information

Code	Lamps	Length mm	Power Supply	Voltage	Emergency
<b>PZC</b> plaster-in	<b>1</b> one lamp <b>2</b> two lamp	<b>Specify length</b>	<b>ND</b> non-dim <b>1-10V</b> 1-10 Volt dim <b>DALI</b> DALI protocol <b>DSI</b> Digital	<b>220-240V*</b> standard <b>120 - 277V</b> universal	<b>EMND</b> non-dim <b>EMST</b> self-test <b>EMDA</b> DALI

\* Items available for Quickship

### Product Description

A plaster-in continuous linear close offset wall wash (or "grazer") system. Can be mounted at the edge of the ceiling to wash a wall, or at the foot of a wall to wash across the floor.

### Lamp

T5 fluorescent  
Base: G5  
Lamp power: 2 x 14W  
Lamp lumens: 2400 lm  
Information shown based on twin lamp configuration.

### Power Supply

- ND: non dimming
- 1-10V: 1-10 Volt dimming, min 10%
- DALI: DALI protocol, min 10%
- DSI: Digital

### Voltage

220-240V AC 50-60Hz  
120-277V universal AC 50-60Hz

### Emergency

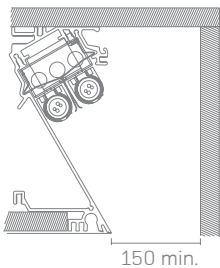
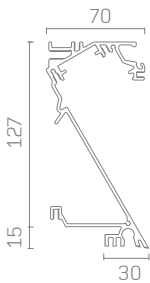
EMND: emergency non-dimmable  
EMST: emergency self-test  
EMDA: emergency DALI protocol

### Finish

Standard product finish is white powder coated RAL 9010 with 30% gloss.

### Note

Indicative lamp information shown. Consult lamp manufacturer for current information.



### Specifier Details