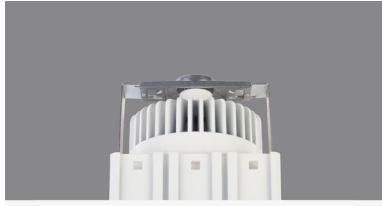


100 Square Downlight

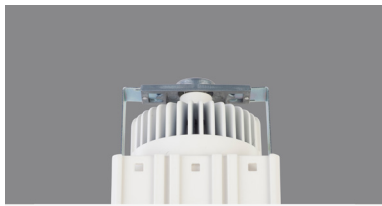
whitegoods

Project Title:

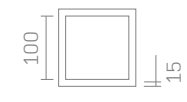
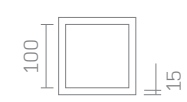
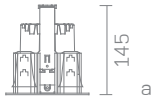
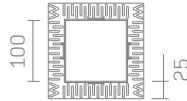
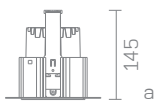
Luminaire Ref:



plaster-in



bezel



Specifier Details

Ordering Information

Code	Module	Diffuser	Driver	Voltage	Emergency
P100SDL* plaster-in	LVC* low voltage capsule	FRG* frosted glass	ND non-dim	220-240V standard	EMND non-dim
B100SDL* bezel	MVC* mains voltage capsule	CLG clear glass	1-10V 1-10 Volt dim	120-277V universal	
P100SDLRD plaster-in reduced depth	CDM-SM* ceramic metal halide supermini	SCG sculpture glass	TR trailing edge dim		
B100SDLRD bezel reduced depth		MPG micro prismatic glass	DALI DALI protocol		
			DSI Digital		

* Items available for Quickship

Product Description

100mm square recessed luminaire with bezel trim or trimless 'plaster-in' for absolute minimal visual impact. Available with various adjustable diffusers for flush and regressed applications.

Lamp

LVC: low voltage capsule
Type: QTax-12
Base: GY6.35
Lamp power: 20-50W
Lamp lumens: 320-930 lm

MVC: mains voltage capsule
Type: QT14
Base: G9
Lamp power: 25-60W
Lamp lumens: 260-820 lm

CDM-SM: ceramic metal halide supermini
Type: CDM-SM
Base: GU6.5
Lamp power: 35W
Lamp lumens: 2200 lm

Cut-out

115 x 115 mm

Power Supply

- ND: non-dimming
- 1-10V: 1-10 Volt dimming, min 10% (low voltage only)
- TR: trailing edge dimming (excludes ceramic metal halide)
- DALI: DALI protocol, min 10% (low voltage only)
- DSI: Digital (low voltage only)

Voltage

220-240V AC 50-60Hz
120-277V universal AC 50-60Hz

Emergency

EMND: emergency non-dimmable (available for LVC and CFL only)

Note

- Indicative lamp information shown. Consult lamp manufacturer for current information.
- RD (reduced depth) only allows flush diffuser position see detail b. Please contact Whitegoods for further lamp specifications.