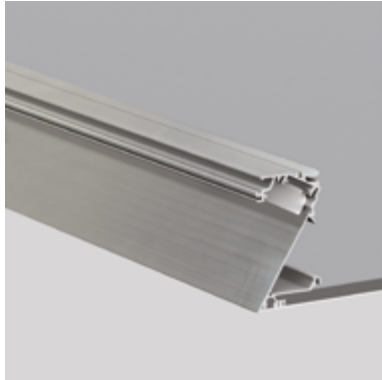


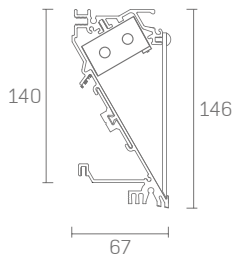
Z Cove LED

Project Title:

Luminaire Ref:



Plaster-in



Specifier Details

Ordering Information

Frame	Type	Length	LED ¹	Color ²	Voltage ³	Power	Diffuser	Mount	Options	
WG-ZC	S	A	L	827	STD	S	OF (std)	P	SB DL	
	PC	A x B	M	830	UNV	D010	SF			
	PR	A x B x C	H	835		D110				
	PZ	A x B x A x B				840				DALI
						927				
						930				
						935				
				940						

For North America specification please visit inter-lux.com/products/z-cove/

Luminaire

- Linear perimeter slot system featuring plaster-in precision knife edge for clean, minimal effect.
- White LED light source.
- Lengths and angles factory cut to exact field dimensions.
- Mitered corners available continuous LED illumination.
- Powder coat painted white - RAL 9010

Type

- S = Straight run
- PC = Standard patterns coffer 2, 3 or 4sided with 90° corners
- PR = Standard patterns raft 2, 3 or 4sided with 90° corners
- PZ = Non-standard patterns and/or corners other than 90°, consult factory

Length

- A, B, C = specify millimetres to the nearest 1mm (i.e. 5000mm) For patterns specify each length (i.e. 2 sided: A x B = 605mm x 305mm; 3 sided: A x B x C; 4 sided: A x B x A x B)

LED¹

- L = Low Power (10W/m)
- M = Mid Power (20W/m)
- H = High Power (33W/m)

Color / Lumens²

- 80+ CRI minimum (Low/Mid/High)
- 827 = 2700K, 771/1433/2266 lm/m
 - 830 = 3000K, 771/1433/2266 lm/m
 - 835 = 3500K, 771/1492/2358 lm/m
 - 840 = 4000K, 817/1850/2404 lm/m
 - For 90+ CRI specify 927, 930, etc.

Voltage³

- STD = 220-240V
- UNV = 120-277V (excludes N. America)

Power Supply (remote)

- S = Standard driver, non-dimming
- D010 = 0-10V dimming, min 1%
- D110 = 1-10 Volt dimming, min 1%
- DALI = DALI protocol, min 1%

Diffuser

- OF = Opal flat diffuser (standard)
- SF = Satin flat diffuser

Mounting

- P = plaster-in

Options

- SB = Side bracket
- DL = Damp location.

Notes

- Wattage shown does not include power supplies/drivers.
- Source lumens shown. Lumens for CRI 90(+), is about 16% lower compared to standard CRI 80(+).
- For specification of Whitegoods products in North America please visit interlux.com/whitegoods
- Manufacturer LED module detail shown. Refer to photometry data for delivered lumens (LM79-08 results) on the Whitegoods website.