

# 20 Linear Bezel Semi-Recessed Wallwash LED

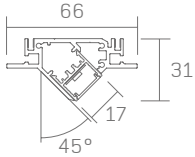
whitegoods

Project Title: .....

Luminaire Ref: .....



Bezel



## Ordering Information

Frame	Type	Length	LED <sup>1</sup>	Color <sup>2</sup>	Voltage <sup>4</sup>	Power	Diffuser	Mount	Options
WG-SRB20LWW	S	A	L M	827 830 835 840 927 930 935 940	STD UNV	S D010 D110 DALI	OD (std) SD	HC	C4 (std) C10 C20 C30 DL

For North America specification please visit [inter-lux.com/products/srb20lww/](http://inter-lux.com/products/srb20lww/)

### Luminaire

- Continuous, evenly illuminated snap-in lens without visible LED pattern.
- Standard Opal Diffuser for even illumination and no LED appearance. Satin Diffuser for high efficiency and minimal LED appearance.
- Field replaceable LED boards.
- 80+ CRI, 3 steps MacAdam.
- Lengths factory cut to exact field dimensions.
- Powder coat painted white - RAL 9010.
- Luminaires rated at 40° maximum ambient temperature.

### Type

- S = Straight run

### Length

- A = specify millimetres to the nearest 1mm (i.e. 5000mm)

### LED<sup>1</sup>

- L = Low Power (10W/m)
- M = Mid Power (20W/m)

### Color / Lumens<sup>2</sup>

80+ CRI minimum (Low/Mid)

- 828 = 2700K, 1037/1752 lm/m
- 831 = 3000K, 1125/1900 lm/m
- 836 = 3500K, 1125/1900 lm/m
- 841 = 4000K, 1165/1972 lm/m
- For 90+ CRI specify 927, 930, etc.

### Voltage<sup>4</sup>

- STD = 220-240V
- UNV = 120-277V (excludes N. America)

### Power Supply (remote)

- S = Standard driver, non-dimming
- D010 = 0-10V dimming, min 1%
- D110 = 1-10 Volt dimming, min 1%
- DALI = DALI protocol, min 1%

### Diffuser

- OD = Opal diffuser (standard)
- SD = Satin diffuser

### Mounting

- HC = hard ceiling

### Options

- C4 = 1220mm tray cable (standard)
- C10 = 3000mm tray cable
- C20 = 6000mm tray cable
- C30 = 9000mm tray cable
- DL = Damp location

## Notes

- Wattage shown does not include power supplies/drivers.
- Delivered lumens with satin diffuser shown. Lumens for CRI 90(+), are about 16% lower compared to standard CRI 80(+).
- Remote power supply required. See power supply page for details.
- For specification of Whitegoods products in North America please visit [interlux/whitegoods](http://interlux/whitegoods)
- Manufacturer LED module detail shown. Refer to photometry data for delivered lumens (LM79-08 results) on the Whitegoods website.

## Specifier Details