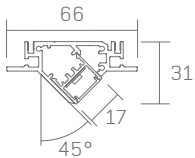


Project Title: .....

Luminaire Ref: .....



Bezel



**Ordering Information**

Frame	Type	Length	LED <sup>1</sup>	Color <sup>2</sup>	Voltage <sup>4</sup>	Power	Diffuser	Mount	Options
WG-SRB20LCFW	S	A	L	827	STD	S	OD (std)	HC	C4 (std)
			M	830	UNV	D010	SD		C10
				835		D110			C20
				840		DALI			C30
				927					DL
				930					
				935					
				940					

For North America specification please visit [inter-lux.com/products/srb20lcfw/](http://inter-lux.com/products/srb20lcfw/)

**Luminaire**

- Continuous, evenly illuminated snap-in lens without visible LED pattern.
- Standard Opal Diffuser for even illumination and no LED appearance. Satin Diffuser for high efficiency and minimal LED appearance.
- Field replaceable LED boards.
- 80+ CRI, 3 steps MacAdam.
- Lengths factory cut to exact field dimensions.
- Powder coat painted white - RAL 9010.
- Luminaires rated at 40° maximum ambient temperature.

**Type**

- S = Straight run

**Length**

- A = specify millimetres to the nearest 1mm (i.e. 5000mm)

**LED<sup>1</sup>**

- L = Low Power (10W/m)
- M = Mid Power (20W/m)

**Color / Lumens<sup>2</sup>**

- 80+ CRI minimum (Low/Mid)
- 829 = 2700K, 1037/1752 lm/m
  - 832 = 3000K, 1125/1900 lm/m
  - 837 = 3500K, 1125/1900 lm/m
  - 842 = 4000K, 1165/1972 lm/m
  - For 90+ CRI specify 927, 930, etc.

**Voltage<sup>4</sup>**

- STD = 220-240V
- UNV = 120-277V (excludes N. America)

**Power Supply (remote)**

- S = Standard driver, non-dimming
- D010 = 0-10V dimming, min 1%
- D110 = 1-10 Volt dimming, min 1%
- DALI = DALI protocol, min 1%

**Diffuser**

- OD = Opal diffuser (standard)
- SD = Satin diffuser

**Mounting**

- HC = hard ceiling

**Options**

- C4 = 1220mm tray cable (standard)
- C10 = 3000mm tray cable
- C20 = 6000mm tray cable
- C30 = 9000mm tray cable
- DL = Damp location

**Notes**

- 1 Wattage shown does not include power supplies/drivers.
- 2 Delivered lumens with satin diffuser shown. Lumens for CRI 90(+), are about 16% lower compared to standard CRI 80(+).
- 3 Remote power supply required. See power supply page for details.
- 4 For specification of Whitegoods products in North America please visit [interlux.com/whitegoods](http://interlux.com/whitegoods)
- 5 Manufacturer LED module detail shown. Refer to photometry data for delivered lumens (LM79-08 results) on the Whitegoods website.

Specifier Details