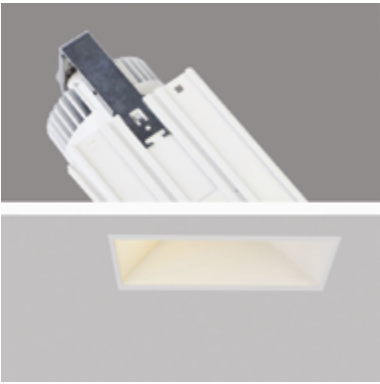


Project Title: \_\_\_\_\_

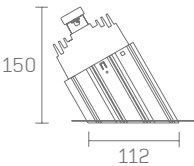
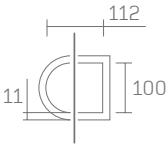
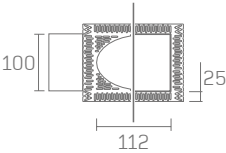
Luminaire Ref: \_\_\_\_\_



plaster-in



bezel



Specifier Details

| Ordering Information       |                   |                     |          |                      |                           |                            |         |
|----------------------------|-------------------|---------------------|----------|----------------------|---------------------------|----------------------------|---------|
| Frame                      | LED <sup>1</sup>  | Rated Lumens        | Beam°    | Voltage <sup>2</sup> | Power Supply              | Accessories                | Options |
| WG-P100SAG22<br>plaster-in | 80 CRI<br>XTD-827 | <b>1300</b><br>9.5W | 38<br>54 | STD<br>UNV           | S<br>D010<br>D110<br>DALI | AL<br>AS<br>CG<br>FR<br>MP | EM      |
|                            | XTD-830           | <b>965</b>          |          |                      |                           |                            |         |
| WG-B100SAG22<br>bezel trim | XTD-835           | 6.6W                |          |                      |                           |                            |         |
|                            | XTD-840           |                     |          |                      |                           |                            |         |
|                            | 95 CRI<br>XTD-927 | <b>965</b><br>9.2W  |          |                      |                           |                            |         |
|                            | XTD-930           |                     |          |                      |                           |                            |         |
|                            | XTD-935           |                     |          |                      |                           |                            |         |
|                            | XTD-940           |                     |          |                      |                           |                            |         |

For North America specification please visit [inter-lux.com/products/100-square-angled-gimbal-22/](https://inter-lux.com/products/100-square-angled-gimbal-22/)

Luminaire

- Trimless ‘plaster-in’ or bezel trim angled gimbal for drywall ceilings with 22.5° tilt.
- 30° adjustable lamp insert standard.
- Installation from below for remodel or new construction. ‘Easy click’ tool free installation of diecast aluminum lamp insert module.
- Diecast aluminum trim housing with heavy gauge galvanized steel yoke with removable jbox from below ceiling.
- Pre-wired with a ‘Plug and Play’ electrical connection.
- Open aperture standard, accessories available. Powder coat painted white - RAL 9010.

LED<sup>1</sup>

- Xicato XTM 80 Series, 80 CRI
- XTD-827 = 2700K
  - XTD-830 = 3000K
  - XTD-835 = 3500K
  - XTD-840 = 4000K
- Xicato XTM Artist Series, 95 CRI
- XTD-927 = 2700K
  - XTD-930 = 3000K
  - XTD-935 = 3500K
  - XTD-940 = 4000K

Rated Lumens<sup>3</sup>

- Xicato XTM 80 Series, 80 CRI
- 1300 = 1300 lm @ 700mA, 9.5W
  - 965 = 965 lm @ 500mA, 6.6W
- Xicato XTM Artist Series, 95 CRI
- 965 = 965 lm @ 500mA, 9.2W

Beam°

- 38 = 38° accent illumination
- 54 = 54° general illumination

Voltage<sup>2</sup>

- STD = 220-240V
- UNV = 120-277V (excludes N. America)

Power Supply (integral)

- S = Standard driver, non-dimming
- D010 = 0-10V dimming, min 1%
- D110 = 1-10 Volt dimming, min 1%
- DALI = DALI protocol, min 1%

Accessories (open aperture standard)

- AL = hex louver
- AS = snoot
- CG = regressed clear glass
- FR = regressed frosted diffuser
- MP = regressed micro prismatic glass

Options

- EM = Contact factory for emergency lighting options.

Notes

- 1 Other lumen packages available, consult factory.
- 2 For specification of Whitegoods products in North America please visit [inter-lux/whitegoods](https://inter-lux/whitegoods)
- 3 Manufacturer LED module detail shown. Refer to photometry data for delivered lumens (LM79-08 results) on the Whitegoods website.