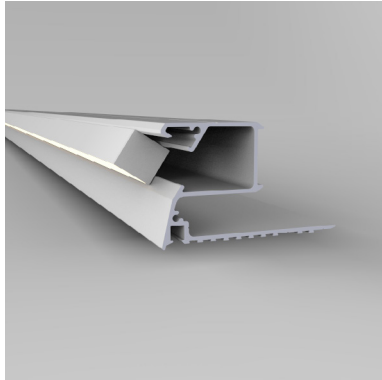


Mini Z Cove LED

whitegoods

Project Title:

Luminaire Ref:



plaster-in

Ordering Information						
Code	Module	Lumens lm/m	Length (mm)	Driver	Voltage	Emergency
PZEC plaster-in	CV-830* 85 CRI	1117* 20.0W per meter opal diffuser 1464* 20.0W per meter clear diffuser	Specify length	ND* non-dim 0-10V 0-10 Volt dim 1-10V 1-10 Volt dim DALI DALI protocol	220-240V standard 120-277V universal	EMND non-dim EMST self-test EMDA DALI
	CC-830 80 CRI	1958 21.0W per meter opal diffuser 2566 21.0W per meter clear diffuser				

* Items available for Quickship

Product Description

A miniature continuous linear wall wash with minimal visual impact. Can be specified to any desired length. Optimised for high efficiency LEDs.

Module

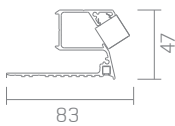
Example code: CC-830-1117

CV = Whitegoods constant voltage LED

CC = Whitegoods constant current LED

830 = 85+ CRI with 3000 Kelvin

1117 = 1117 lumens per meter



Module: CV-827 / 830 / 835/ 840

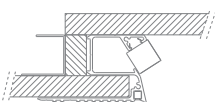
1117 lm/m running at 20.0W/m

Opal diffuser 110° beam angle

Module: CV-827 / 830 / 835/ 840

1464 lm/m running at 20.0W/m

Clear diffuser 97° beam angle



Module: CC-827 / 830 / 835/ 840

1958 lm/m running at 21.0W/m

Opal diffuser 110° beam angle

Module: CC-827 / 830 / 835/ 840

2566 lm/m running at 21.0W/m

Clear diffuser 97° beam angle

Data shown is delivered lumens

Specifier Details

Driver

- ND: non-dimming
- 0-10V: 0-10 Volt dimming, min 0.1% (excl. constant voltage configuration)
- 1-10V: 1-10 Volt dimming, min 10%
- DALI: DALI protocol, min 10%

All drivers are suitable for remote mounting up to 10 meters from fixture. Longer distances are available on request.

Voltage

220-240V AC 50-60Hz

120-277V universal AC 50-60Hz

Emergency

EMND: emergency non-dimmable

EMST: emergency self-test

EMDA: emergency DALI protocol

Finish

Standard product finish is white powder coated RAL 9010 with 30% gloss.

Note

- Indicative LED information shown. Refer to photometry data for typical results.
 - All LED boards available in 2700, 3000, 3500 and 4000 Kelvin.
 - Luminaires rated at 40°C maximum ambient temperature.
 - LED boards in increments of:
constant voltage = 25mm
constant current = 100mm
 - Max run from a single driver:
constant voltage = 4.8 meters
constant current = 1.5 meters
- Please contact Whitegoods for further LED specifications.