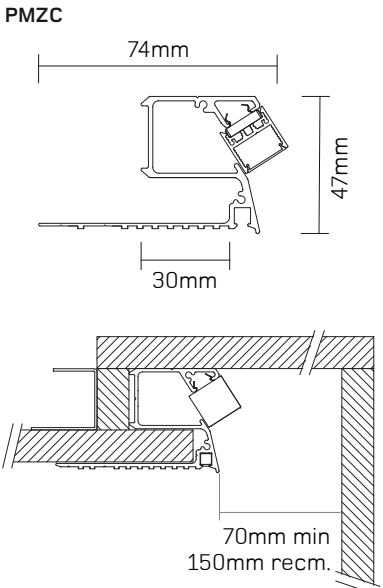


installation instructions
mini Z cove :

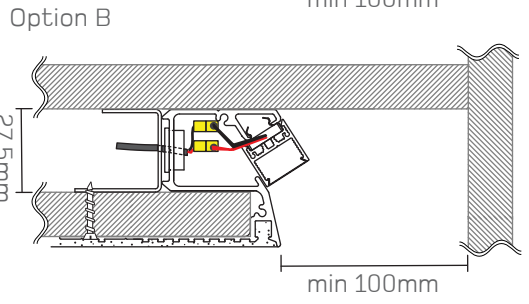
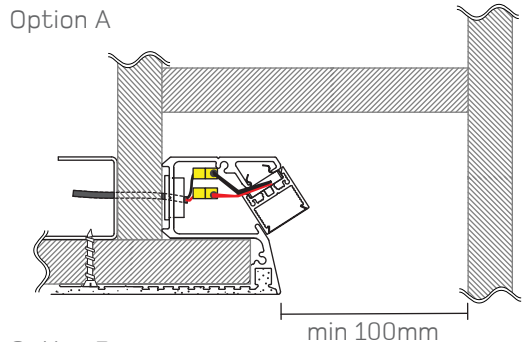


- ⚠ Ensure all mains power is switched off at source.
- ⚠ Do not attempt installation or maintenance on electrically live product.
- ⚠ Installation and maintenance to be carried out only by a qualified electrician or electrical contractor.

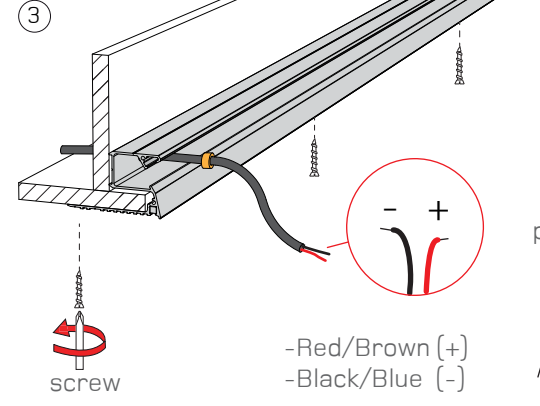


Installation for single fixture and module

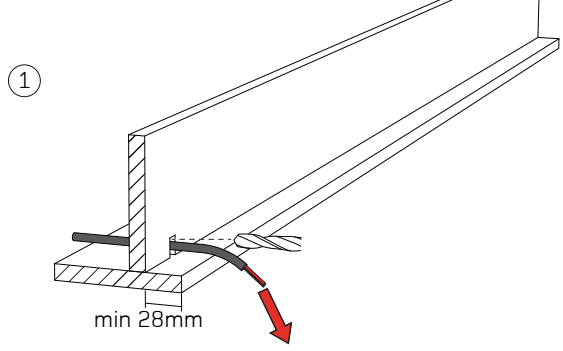
Application options



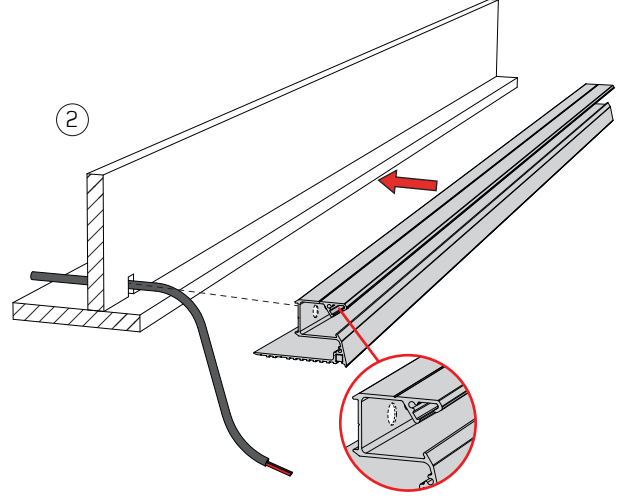
3. Feed the supplied cable grommet on to the cable to protect the cable from the drill hole.
- Align fixture as straight as possible before securing in place.
 - Additional Ø7mm screw holes can be drilled in to the fixture plaster-in trim if required.



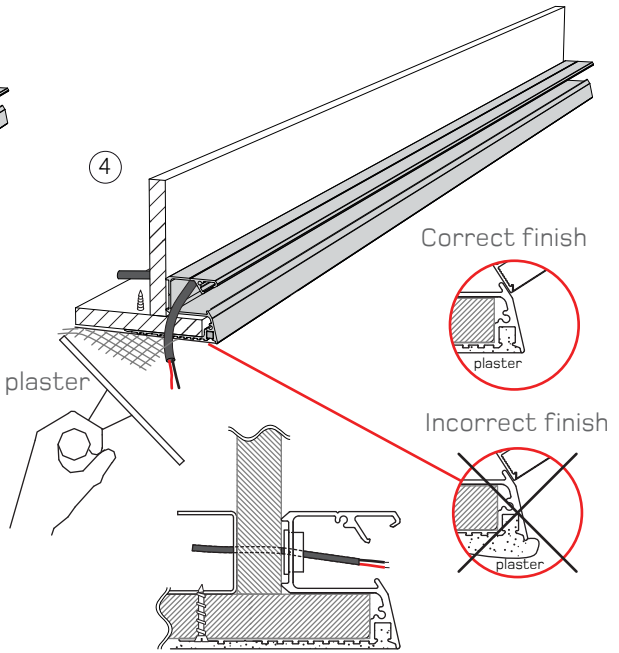
1. Construct a false ceiling (if applicable). Drill 10mm hole to feed 2 core 1.5-2.5mm² incoming DC power cable (not free issued). Expose 300-500mm of cable from wall.



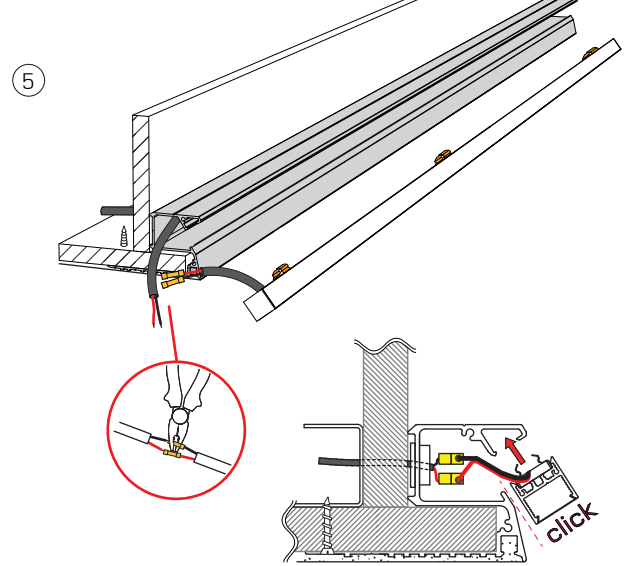
2. Align fixture with cantilevered ceiling. Additional 10mm hole in fixture may be required to pass cabling through. Drill hole to align cable feed and fixture.



4. Align insert to fixture so that it is flush. Apply plaster tape between fixture and ceiling. Skim plaster the fixture to specification below.



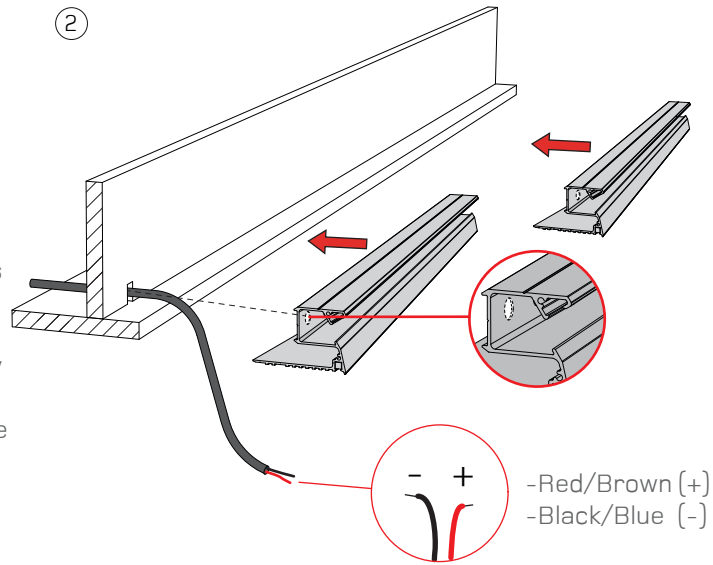
5. Connect power from driver with the splices from the insert. Hide remaining wire within the fixture. Attach insert to fixture ensuring a positive click sound is heard. Dashed (red) line highlights line of entry for insert. Position insert(s) as specified in sign off drawings.



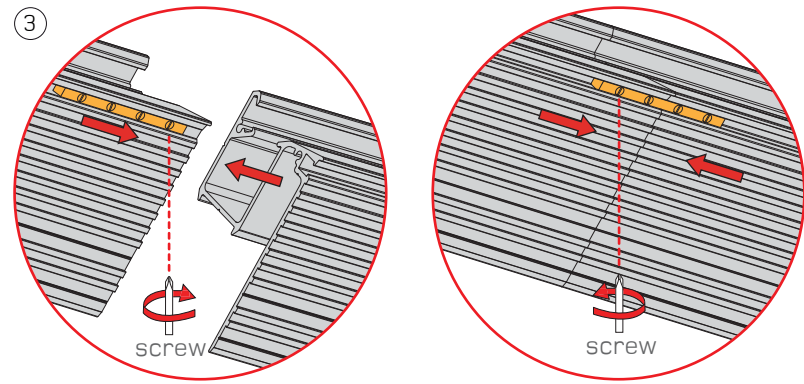
Installation for multiple fixture and modules

1. Follow step number 1 from previous side (single fixture installation)

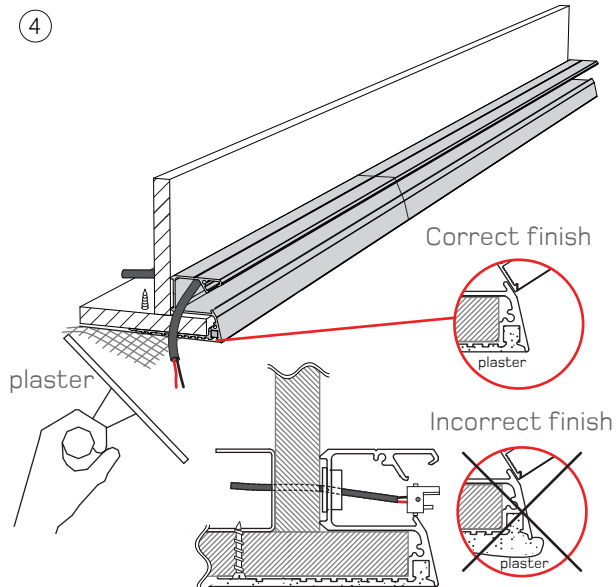
2. Align fixture with cantilevered ceiling. Check position and quantity of power cables as specified in sign-off drawings. Additional 10mm hole in fixture may be required to pass cabling through. Drill hole to align cable feed and fixture.



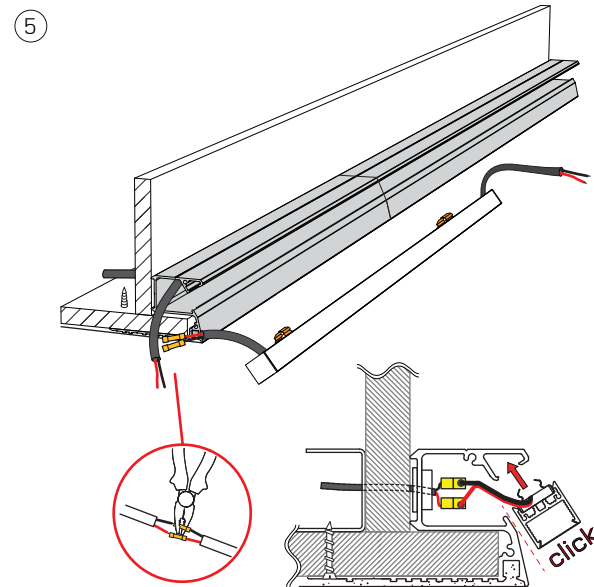
3. Align multiple fixtures together
 - Loosen grub screws on the joint connector.
 - Slide connector(s) across until it is equally spaced between the two fixtures.
 - Ensure the 2 fixtures are securely joined together before fixing to the ceiling.



4. Align second fixture so that it is flush. Apply plaster tape between fixture and ceiling. Skim plaster the fixture to specification below.



5. Connect power from driver with the splices from the insert. Hide remaining wire within the fixture. Attach insert to fixture ensuring a positive click sound is heard.
 - Dashed (red) line highlights line of entry for insert.



6. Connect the two insert connectors together. Hide remaining wire within the fixture. Attach insert to fixture ensuring a definable click sound is heard. Dashed (red) line highlights line of entry for insert. Position insert(s) as specified in sign off drawings.

