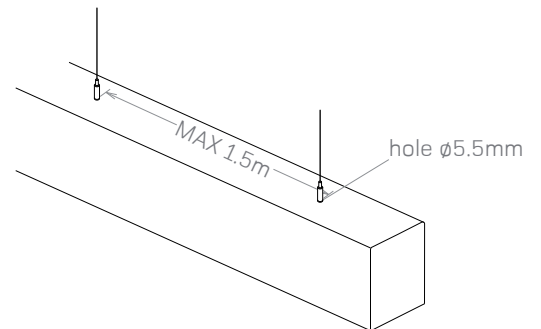
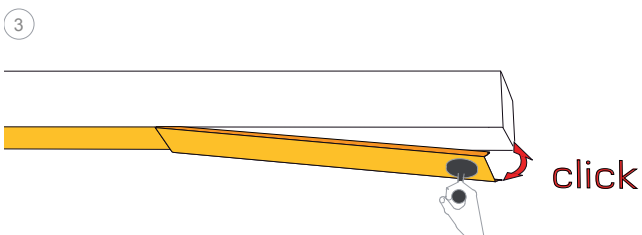
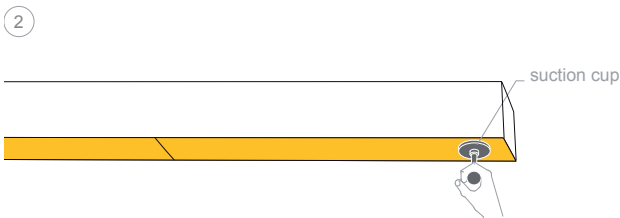
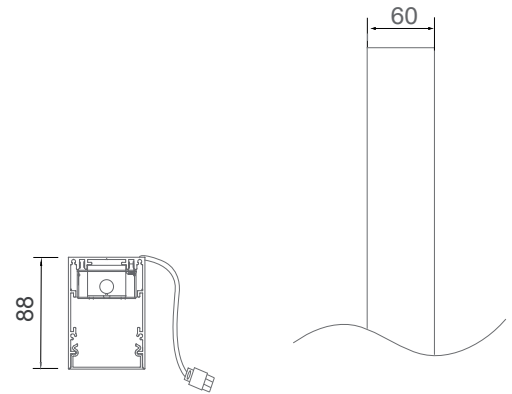
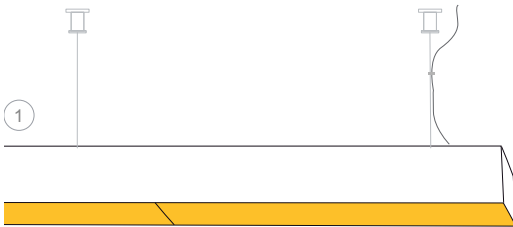
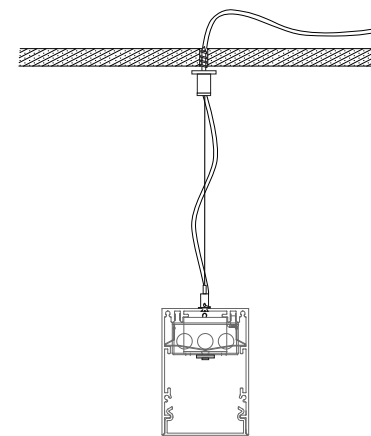
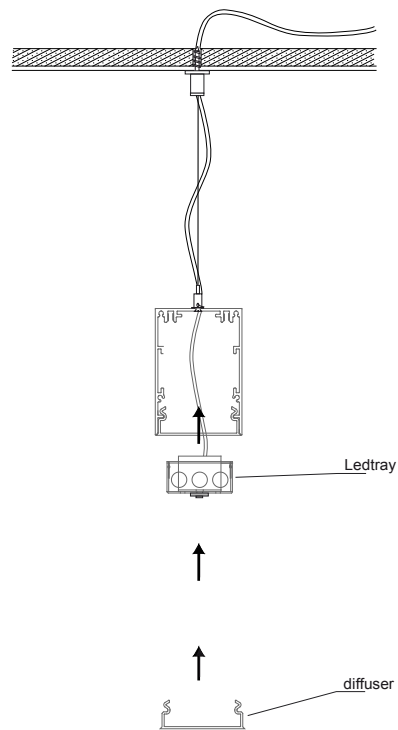
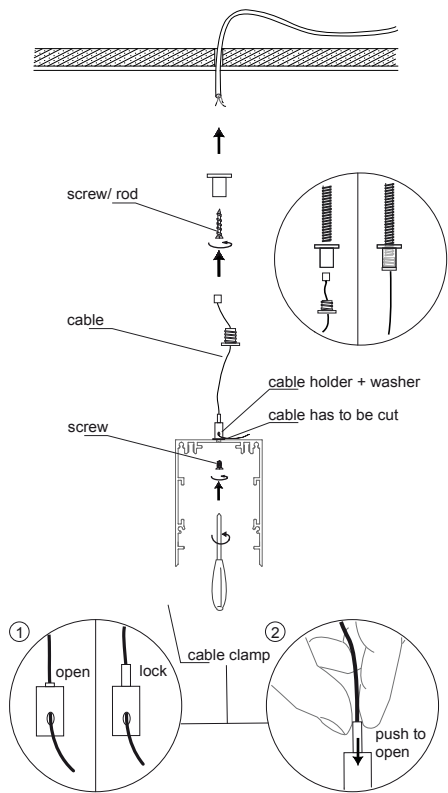


installation instructions / 60 Linear Suspension Mounting

SP60L-(length)

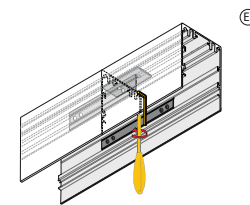
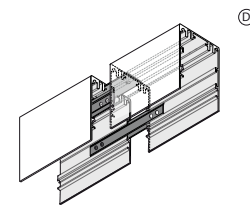
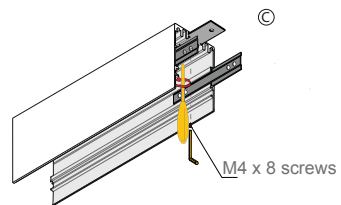
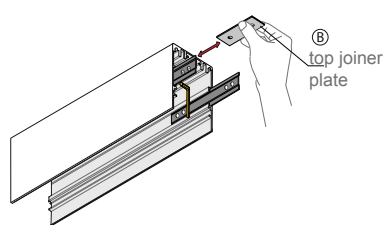
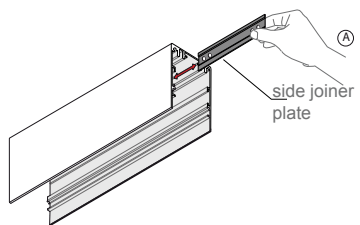


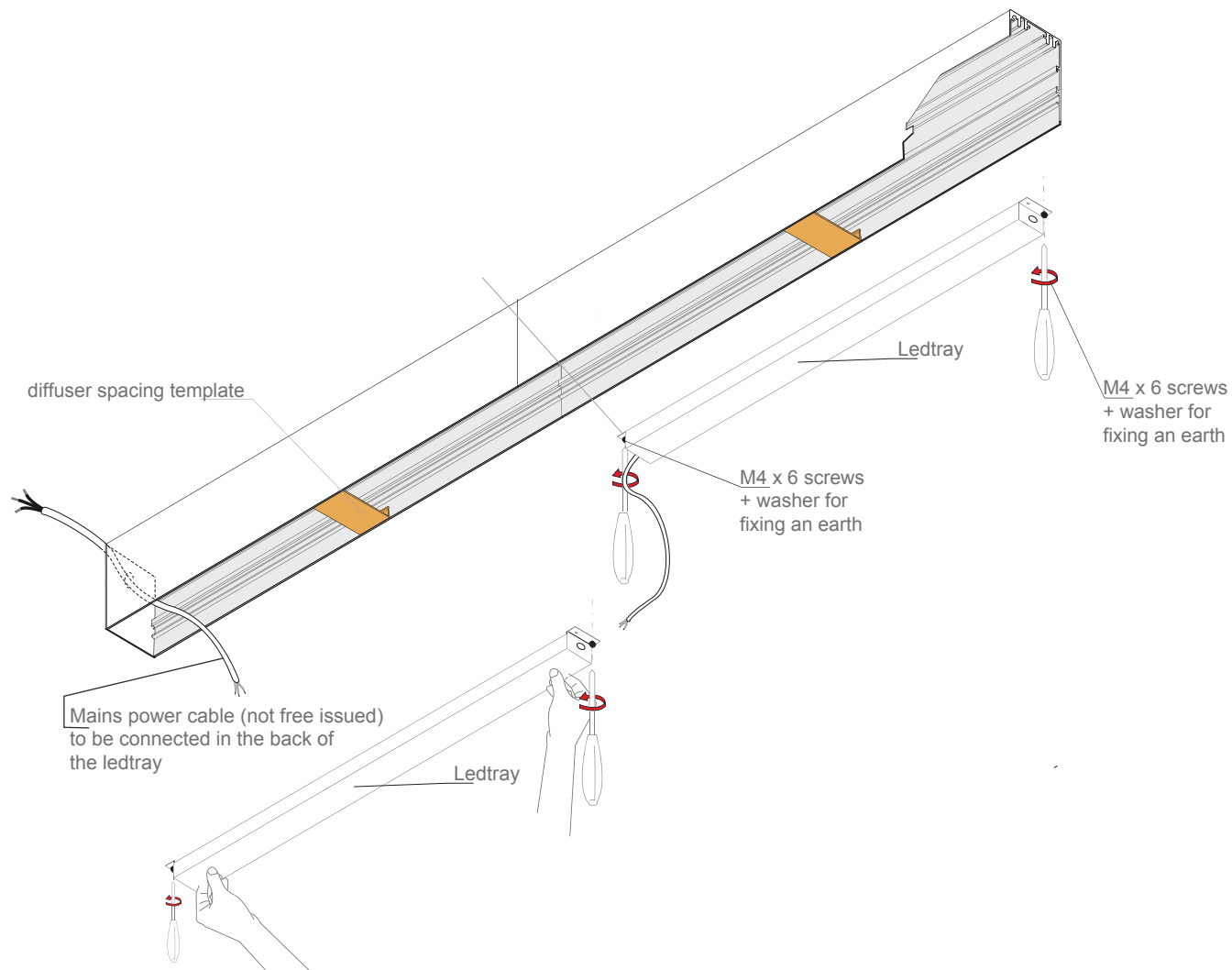


SP60L -(mm)



All linear luminaires require support from above as shown, 2 supports per luminaire (if greater than 1500mm in length additional cable supports are required at 750mm intervals). Mains power supply to enter through end plate grommit hole. N.B. when suspending Luminaires with the cable suspensions, alternative lateral fixings should be used as the cable suspensions do not provide fore and aft or lateral rigidity. During installation the aperture width must be maintained at 60mm.

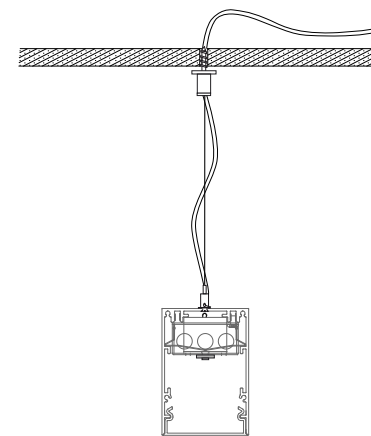
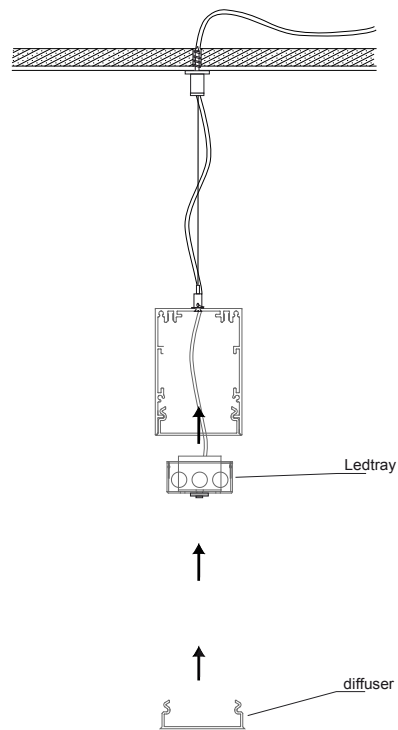
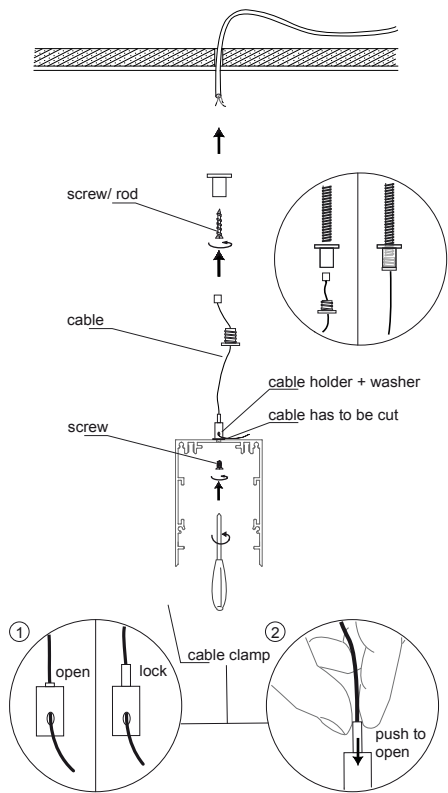
A,B,C,D only for continuous system





Do not remove the diffuser spacing template until the luminaire has been installed within the ceiling. If during installation the template falls from luminaire recheck diffuser aperture dimension 60mm, and return aperture to the required dimension. On completion of installation if diffuser spacing templates does not fit correctly/fall from luminaire then the diffuser will also not fit correctly, resulting in the failure of the luminaire.

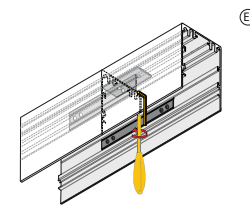
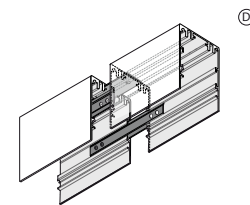
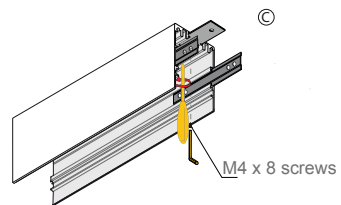
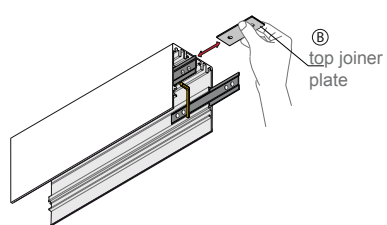
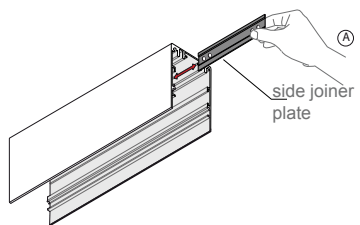
Installation	<p>The installation of these products should only be carried out by a suitably qualified electrician in accordance with the instructions supplied with the product. All installation instructions can be downloaded from our website. We recommend that they are included with construction issue drawings and specifications.</p> <p>Ceiling void depths for recessed downlights and linear luminaires: The Ceiling void depth should ideally be 25mm deeper than the overall height of the luminaire. When a fire-hood and/or a remote emergency pack is to be used, the void depth and space surrounding the luminaire will need to be increased.</p>
Dimensions and specification	<p>The drawings, dimensions and finishes of the products in this catalogue and any accompanying information are purely indicative. Great care is taken to provide up to date information in this publication, however, due to a continuing programme of design and development, we reserve the right to change these dimensions without prior notice. Please check the website for most up to date information. If a dimension is critical to the success of your project, please confirm it directly with the technical department. Throughout this publication, cut-out sizes refer to the aperture required when fittings are mounted in soft plasterboard. For fibrous tiles, timber, metal tiles and cast-in construction, check dimensions on site, or ask for a sample. Whitegoods reserves the right to discontinue any product in this publication at any time without prior notice.</p>
Performance	<p>All photometric data supplied is taken from a standard production luminaire tested under ideal laboratory conditions and may vary from data taken in alternative conditions. All calculated light levels and/or lighting plots provided are offered for guidance only. The customer must satisfy themselves that luminaires proposed are suitable for the application intended in all performance and physical criteria.</p>
Temperature and physical environment	<p>All products are tested with stated lamp wattage. Incorrect lamp types and wattages may effect efficiency, create glare and seriously overheat the luminaire. Adequate ventilation and free air space around fittings (in accordance with the installation instructions supplied with the product) will be necessary when used in confined spaces where elevated temperatures will occur. All luminaires are designed to operate in a maximum 30degree ambient temperature. Operating in ambient temperatures above this can affect performance and the mechanical functionality of the luminaire.</p>
Intellectual property	<p>In order that we can continue to develop innovative quality products, we believe it is of critical importance that we protect our ideas and visions. Therefore any infringement of our intellectual property will be vigorously pursued.</p>
Returns	<p>We cannot offer refunds on Custom or Tailored products, Standard product may be eligible for re-stocking within 3 months of original purchase date, subject to a 30% handling charge. All original packaging and documentation must be present and goods must be in original condition.</p>
Service	<p>Whitegoods will endeavor to fulfill all orders as quickly as possible and treat all customers with the highest regard. For further information about Whitegoods products and services, please visit www.whitegoods.com.</p>
WEEE directive	<div></div> <p>The Waste Electrical and Electronic Equipment Directive (WEEE Directive) is the European Community directive 2002/96/EC on waste electrical and electronic equipment, together with the RoHS Directive 2002/95/EC which became European Law in February 2003, setting collection, recycling and recovery targets for all types of electrical goods. This imposes responsibility for the disposal of waste electrical and electronic equipment (WEEE) on the manufacturers of such equipment. To meet these targets Whitegoods has become a member of Lumicom to allow us to meet the current and future directives. For further information on the WEEE directive please contact our offices. WEEE Registration number is WEE/FG0362QY</p>



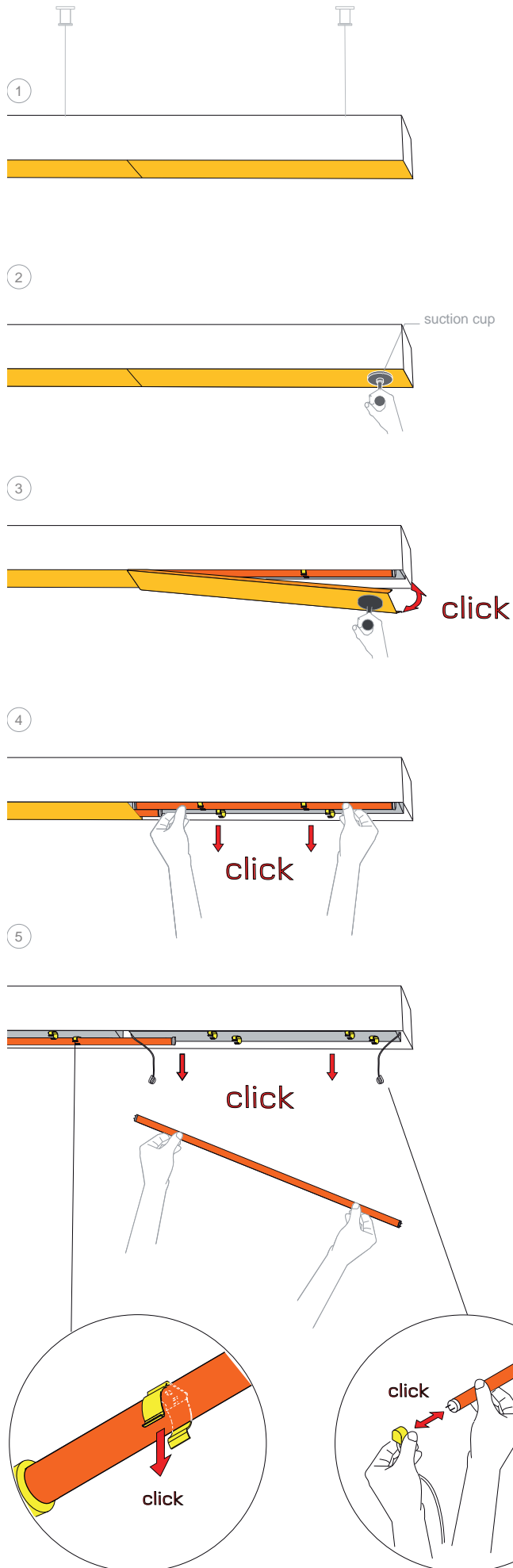
SP60L -(mm)

All linear luminaires require support from above as shown, 2 supports per luminaire (if greater than 1500mm in length additional cable supports are required at 750mm intervals). Mains power supply to enter through end plate grommit hole. N.B. when suspending Luminaires with the cable suspensions, alternative lateral fixings should be used as the cable suspensions do not provide fore and aft or lateral rigidity. During installation the aperture width must be maintained at 60mm.

A,B,C,D only for continuous system

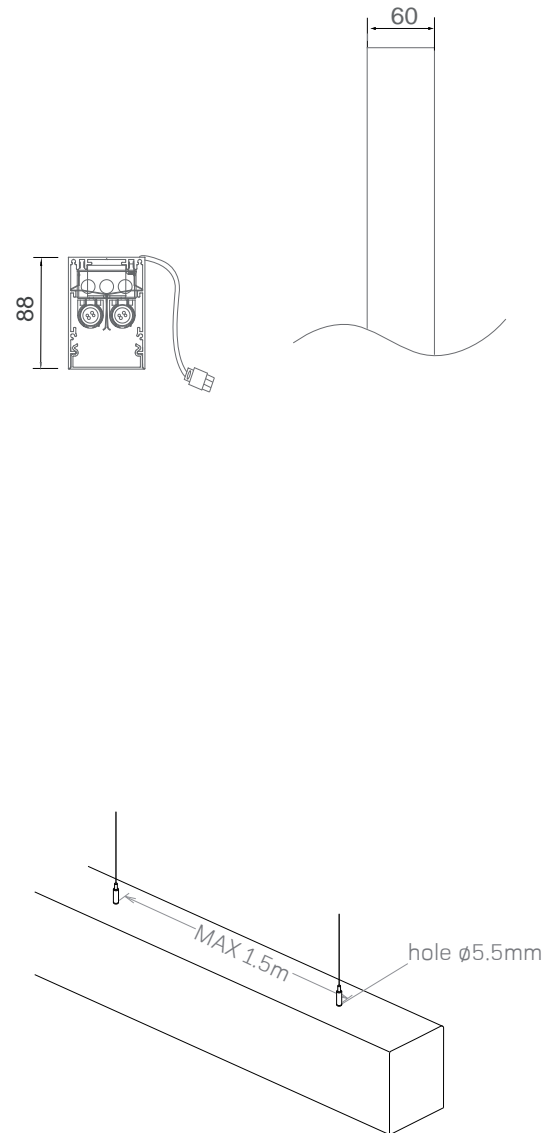


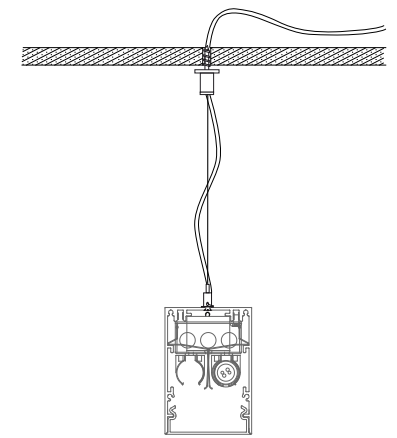
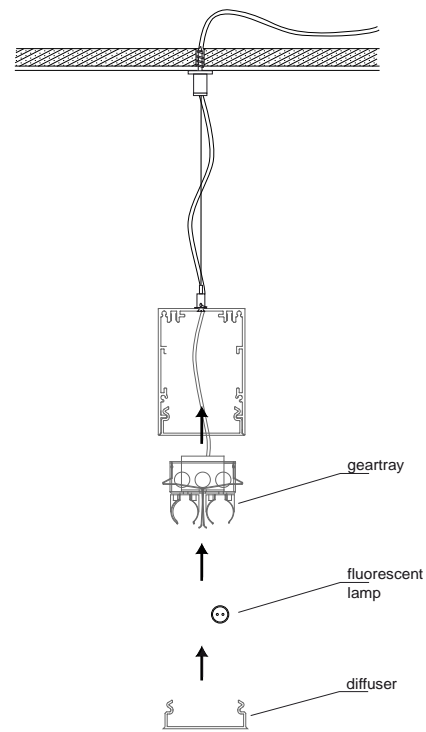
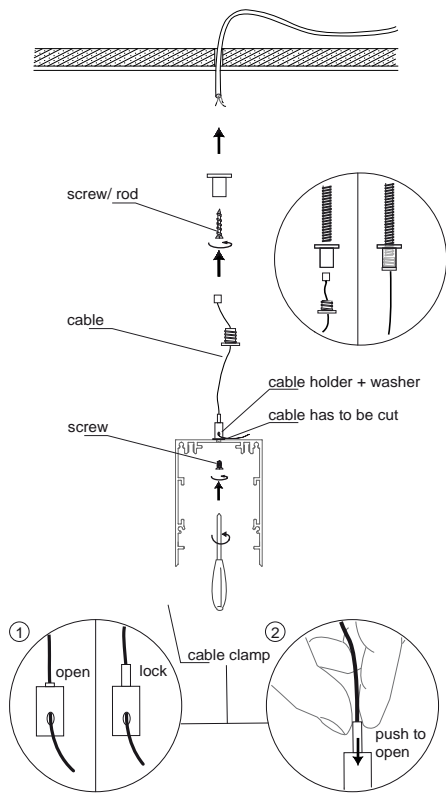
lamp removal



installation instructions / 60 Linear Suspension Mounting

SP60L-(length)

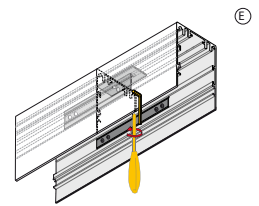
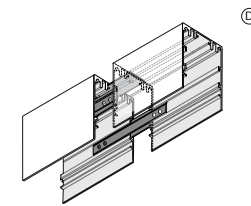
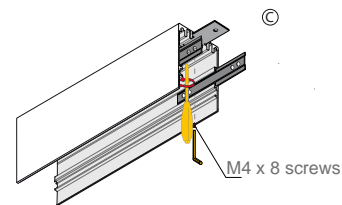
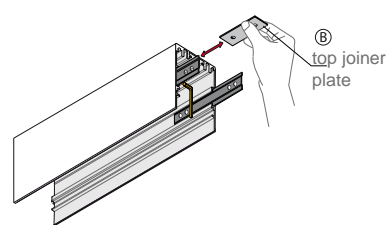
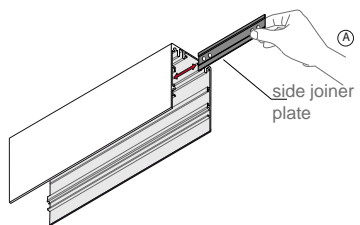


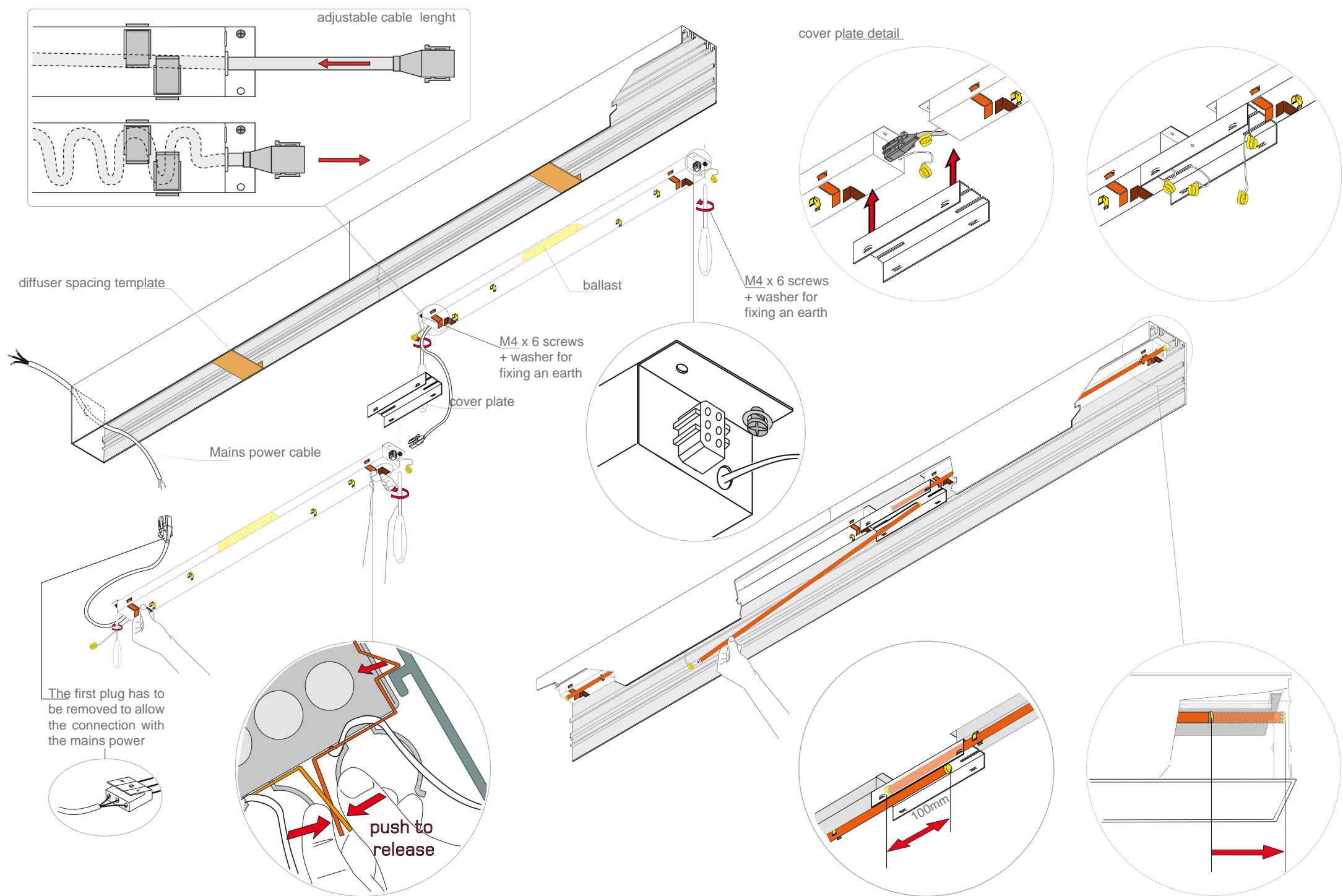


SP60L -(mm)

All linear flourescent luminaires require support from above as shown, 2 supports per luminaire (if greater than 1500mm in length additional cable supports are required at 750mm intervals). Mains power supply to enter through end plate grommit hole. N.B. when suspending Luminaires with the cable suspensions, alternative lateral fixings should be used as the cable suspensions do not provide fore and aft or lateral rigidity. During installation the aperture width must be maintained at 60mm.

A,B,C,D only for continuous system





important information

terms & conditions

The installation of these products should only be carried out by a suitably qualified electrician in accordance with the instructions supplied with the product.

The drawings, dimensions and finishes of the products in this catalogue and any accompanying information are purely indicative.

In order that we can continue to develop innovative quality products, we believe it is of critical importance that we protect our ideas and visions. Therefore any infringement of our intellectual property will be vigorously pursued.

Great care is taken to provide up to date information in this publication, however, due to a continuing programme of design and development, we reserve the right to change these dimensions without prior notice. All dimensions for tailored and custom designed products are as the production drawings and/or a pre-production sample, produced for the project and signed off "as correct" by the client/customer. Whitegoods reserves the right to discontinue any product in this publication at any time without prior notice. Throughout this publication, cut-out sizes refer to the aperture required when fittings are mounted in soft plasterboard. For fibrous tiles, timber, metal tiles and cast-in construction, check dimensions on site, or ask for a sample. It is the customer's responsibility to ensure compliance with specifications that they are contractually obliged to meet. Whitegoods does not accept liability for compliance with any specification other than those generated by Whitegoods. Our specification, or any data supplied in this book or other materials or data supplied by Whitegoods will be deemed as the in force specification of that product regardless of any specification material produced by others. All photometric data supplied is taken from a standard production luminaire tested under ideal laboratory conditions and may vary from data taken in alternative conditions. All calculated light levels and/or lighting plots provided are offered for guidance only. The customer must satisfy themselves that luminaires proposed are suitable for the application intended in all performance and physical criteria.

All products are tested with stated lamp wattage. Incorrect lamp types and wattages may effect efficiency, create glare and seriously overheat the luminaire.

All fittings are designed for normal dry interiors, and are not recommended for use in damp or corrosive situations, unless otherwise stated. Adequate ventilation and free air space around fittings (in accordance with the installation instructions supplied with the product) will be necessary when used in confined spaces where elevated temperatures will occur. Any detail of price or delivery lead time will be an estimate only and cannot be guaranteed. For areas requiring luminaires of a specific ingress protection (for eg IP64) use only luminaires stated to have this rating or higher (i.e IP64 or IP65) and use in accordance with the installation instructions. All 'short shipped' or 'damaged' items must be advised to us within 24 hours of delivery. Whitegoods will not accept responsibility for claims after this time. All goods travel at the customer's risk and peril. Any exporting of goods purchased must be authorised in advance in writing by Whitegoods. We cannot offer refunds on Custom or Tailored products, Standard product may be eligible for re-stocking within 3 months of original purchase date, subject to a 30% handling charge. All original packaging and documentation must be present and goods must be in original condition. No variations to these Terms shall be binding unless agreed in writing between the authorised representatives of the Buyer and the Seller.

Whitegoods will endeavour to fulfil all orders as quickly as possible and treat all customers with the highest regard. For further information about Whitegoods products and services, please visit www.whitegoods.com.

general installation information

Ceiling void depths for recessed downlighters and linear luminaires. The Ceiling void depth should ideally be 25mm deeper than the overall height of the luminaire. When a fire-hood and/or a remote emergency pack is to be used, the void depth and space surrounding the luminaire will need to be increased.

When installing Downlighters types 60, 100 150, fitted with a bezel, into metal tile ceilings, please contact the Technical Department of Whitegoods for detailed installation information and instructions.

WEEE directive



The Waste Electrical and Electronic Equipment Directive (WEEE Directive) is the European Community directive 2002/96/EC on waste electrical and electronic equipment, together with the RoHS Directive 2002/95/EC which became European Law in February 2003, setting collection, recycling and recovery targets for all types of electrical goods. This imposes responsibility for the disposal of waste electrical and electronic equipment (WEEE) on the manufacturers of such equipment. To meet these targets Whitegoods has become a member of Lumicom to allow us to meet the current and future directives. For further information on the WEEE directive please contact our offices.

Registration number is WEE/FG0362QY