

100 square bezel floor wash



A 100mm square low level floor wash luminaire with absolute minimal visual impact.

Suitable for stairs, indicator and corridor lighting.


Applications:

- Where the fitting is to be retro-fitted into an existing finished wall.

Features:

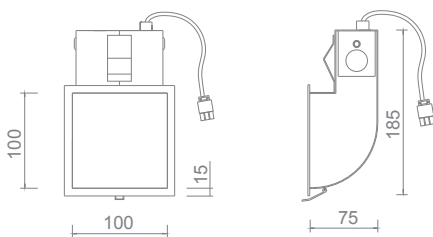
- 'Easy click' tool free second fix internal cartridge.
- Tool free lamp maintenance.
- Pre-wired with a 'Plug and Play' electrical connection.
- LED insert is retro-fittable into existing 100 Floor Wash frame.

code	lamp	type	base	watts	lumen	cut-out
B100SFW-MVC	 Mains voltage capsule	QT14	G9	25	260-1100 lm	115 x 115 mm

code	lamp	colour temperature	CRI (Ra)	watts ⁽¹⁾	life (hr) ⁽²⁾	lumen	cut-out
B100SFW-LED-BR-830-400	 ES Array - 400	3000°K ⁽³⁾	82	7.1W	40k	400 lm	115 x 115 mm

Notes:

1. Driver losses not included.
 2. Until 70% lumen maintenance.
 3. Available in 830 (3000K) or 840 (4000K).
- LED specification subject to change. Please contact us for latest info.
 - All test data taken at recommended operating test point (Tc) temperature of 70°C
 - Dimming versions available.



Other information:

set out guide	Page 156
Important information	Page 181
Accessories	Page 185

whitegoods

Lamp Removal Floor Wash

Lamp Removal Ceiling Wash

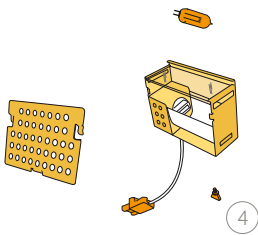
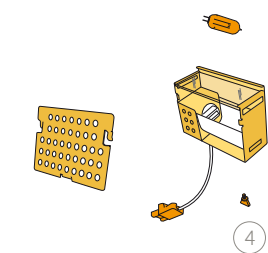
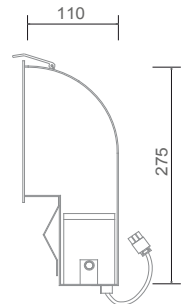
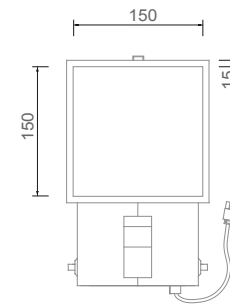
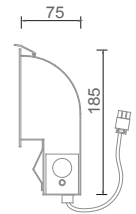
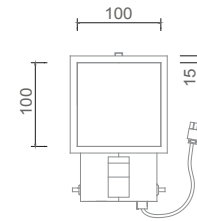
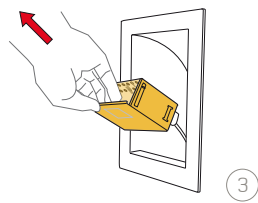
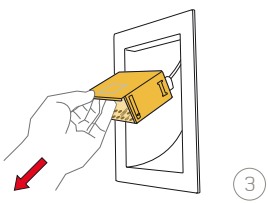
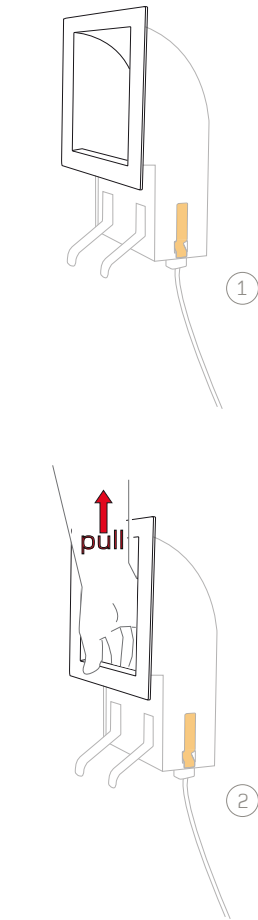
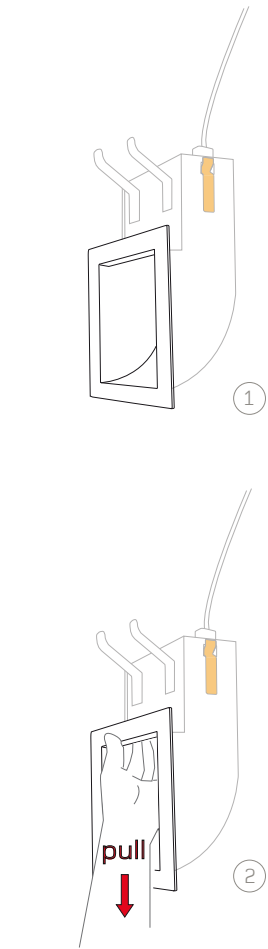
installation instructions: 150/100 bezel ceiling/floor wash:

B150SCW-MVL
B150SCW-LED
B150SFW-MVL
B150SFW-LED

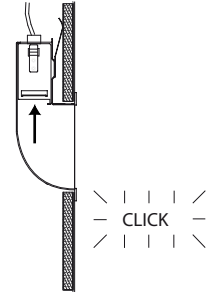
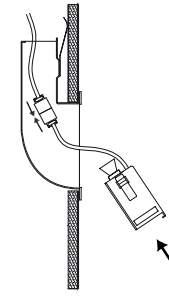
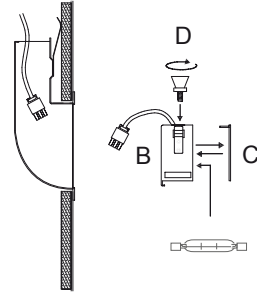
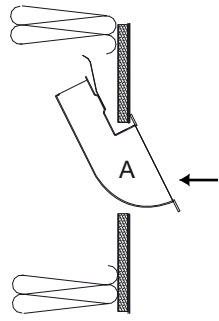
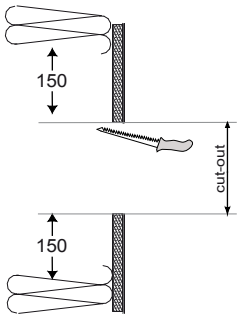
B100SCW-MVC
B100SCW-LED
B100SFW-MVC
B100SFW-LED

cut-out:
165mm x 165mm

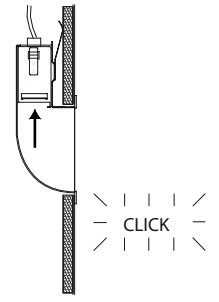
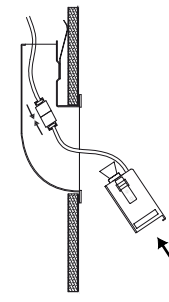
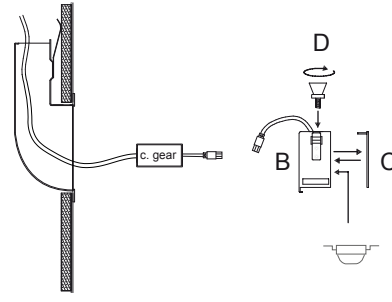
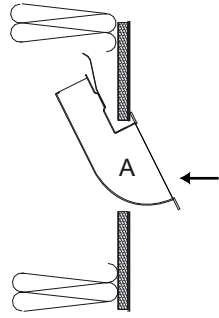
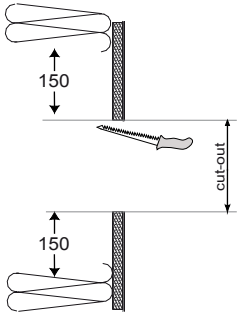
cut-out:
115mm x 115mm



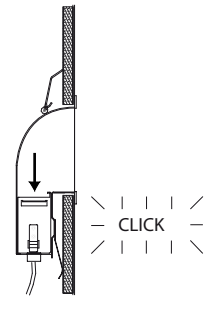
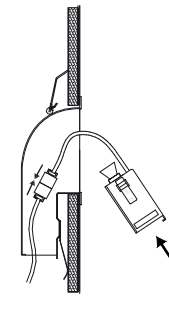
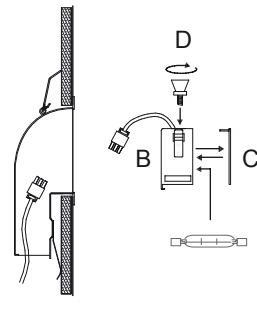
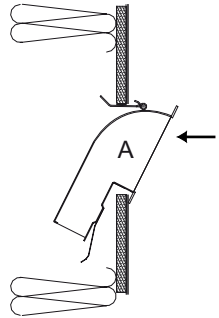
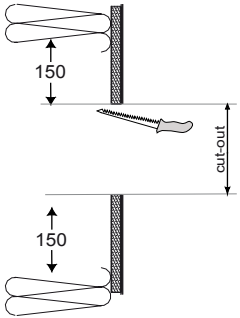
Registration number is WEE/FG0362QY



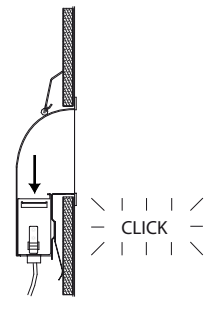
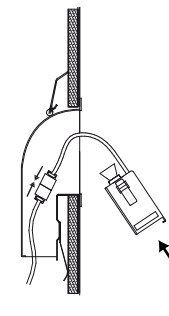
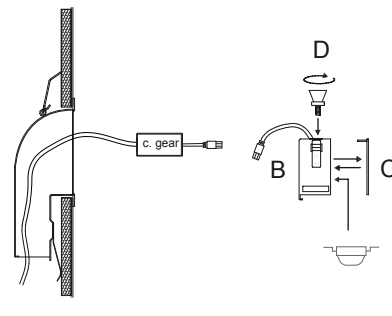
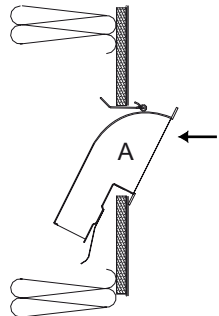
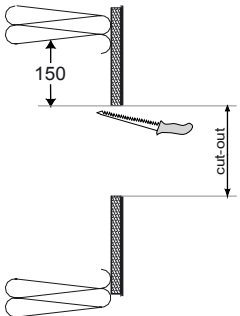
B150SFW-MVL; B100SFW-MVL



B150SFW-LED; B100SFW-LED



B150SCW-MVL; B100SCW-MVL



B150SCW-LED; B100SCW-LED

code	lamp	type	base	watts	lumen	cut-out & recess
B150SFW-MVL	Mains voltage linear	QT14	G9	25 W	260 lm	170 x 170 x 110 mm
B150SFW-LED	Light emitting diode	LED	TBA	TBA	TBA	170 x 170 x 110 mm
B100SFW-MVC	Mains voltage capsule	QT14	G9	25 W	260 lm	120 x 120 x 75 mm
B100SFW-LED-BR-830-400	ES Array - 400	LED	TBA	7.1W	400	115 x 115 x 75 mm
B150SCW-MVL	Mains voltage linear	QT-DE 12	R7s	75 W	TBA	170 x 170 x 110 mm
B150SCW-LED	Light emitting diode	LED	TBA	TBA	TBA	170 x 170 x 110 mm
B100SCW-MVC	Mains voltage capsule	QT14	G9	25-50 W	260-1100 lm	120 x 120 x 75 mm
B100SCW-LED-BR-830-400	ES Array - 400	LED	TBA	7.1W	400	115 x 115 x 75 mm



Installation

Disconnect the mains supply before installation. This fixture is to be installed and maintained by a recognised electrician.

1. Cut-out the required mounting aperture and install the frame (A) to the wall. Make sure the spring clips are fixed securely against the back of the wall. (Use a timber backing for extra support if required).
2. Remove any insulation or obstruction within 150mm of the frame.

Make the electrical connection as follows:

- A. Unplug the female 230/240v 50/60Hz 3-pin connector from the lamp cartridge.
 - B. Connect the mains 230/240v 50/60Hz 3-pin connector to the mains power supply.
 - C. Reconnect the male and female plug.
4. Insert the specified lamp into the lamp cartridge (use only specified lamps).
 5. Assemble and install the lamp cartridge as described below.

Re-lamping Procedure

Disconnect the mains supply before re-lamping

1. Slide the internal lamp cartridge from the mounting frame by utilising the inner lip on the lamp cartridge.
2. Remove the wing nut from the rear of the lamp cartridge by rotating the nut anti-clockwise as shown.
3. Once removed slide out the upper plate to access the lamp aperture.
4. Remove the lamp and replace with the appropriate specified lamp (dispose of lamp according to specific regulations).
5. Slide the upper plate back into position and install the wing nut and tighten.
6. Slide the internal lamp cartridge back into the mounting frame until the unit 'push-clicks' into position.

GB**Installation**

Disconnect the mains supply before installation. This fixture is to be installed and maintained by a recognised electrician.

1. Cut-out the required mounting aperture and install the frame (A) to the wall. Make sure the spring clips are fixed securely against the back of the wall. (Use a timber backing for extra support if required).
2. Remove any insulation or obstruction within 150mm of the frame.

Make the electrical connection as follows:

- A. Unplug the female 230/240v 50/60Hz 3-pin connector from the lamp cartridge.
 - B. Connect the mains 230/240v 50/60Hz 3-pin connector to the mains power supply.
 - C. Reconnect the male and female plug.
4. Insert the specified lamp into the lamp cartridge (use only specified lamps).
 5. Assemble and install the lamp cartridge as described below.

Re-lamping Procedure

Disconnect the mains supply before re-lamping

1. Slide the internal lamp cartridge from the mounting frame by utilising the inner lip on the lamp cartridge.
2. Remove the wing nut from the rear of the lamp cartridge by rotating the nut anti-clockwise as shown.
3. Once removed slide out the upper plate to access the lamp aperture.
4. Remove the lamp and replace with the appropriate specified lamp (dispose of lamp according to specific regulations).
5. Slide the upper plate back into position and install the wing nut and tighten.
6. Slide the internal lamp cartridge back into the mounting frame until the unit 'push-clicks' into position.

FR**Installation**

Débrancher la source principale d'alimentation avant de procéder à l'installation. Cet accessoire doit être installé et entretenu par un électricien autorisé seulement.

1. Creuser une ouverture de montage et installer l'armature (A) dans le mur. S'assurer que les brides de ressort adhèrent parfaitement à l'arrière du mur. (Utiliser une latte de bois si un support plus robuste se rend nécessaire).
2. Enlever toute isolation ou obstruction dans les 150 mm autour de l'armature.

Effectuer les connexions électriques comme suit :

- A. Débrancher le connecteur femelle 230/240v 50/60Hz à 3 broches du porte-ampoule.
 - B. Brancher le connecteur principal 230/240v 50/60Hz à 3 broches à l'alimentation électrique principale.
 - C. Rebrancher la prise mâle et femelle.
4. Insérer l'ampoule dans le porte-ampoule (n'utiliser que les ampoules conseillées).
 5. Monter et installer le porte-ampoule comme décrit dans la suite.

Remplacement de l'ampoule

Débrancher la source principale d'alimentation avant de remplacer l'ampoule.

1. Faire glisser le porte-ampoule hors de l'armature de montage en tirant le bec à l'intérieur du porte-ampoule.
2. Dévisser l'écrou à papillon à l'arrière du porte-ampoule en le tournant dans le sens anti-horaire comme indiqué.
3. Ensuite, faire glisser la plaque supérieure pour accéder à l'ampoule.
4. Enlever l'ampoule et remplacer par une ampoule conseillée. Eliminer l'ampoule conformément aux normes en vigueur.
5. Remettre en place la plaque en la faisant glisser dans sa position initiale et revisser l'écrou à papillon en le serrant.
6. Faire glisser le porte-ampoule dans l'armature de montage pour qu'il se bloque dans sa position.

SP**Instalación**

Desconecte la alimentación eléctrica antes de llevar a cabo la instalación. Esta luminaria debe ser instalada y mantenida por un electricista autorizado.

1. Corte la abertura necesaria para empotrar la luminaria y fije el bastidor (A) al muro. Compruebe que las pinzas de sujeción queden firmemente ancladas a la parte posterior del muro. (Si se requiere una fijación más segura utilice un listón de madera para reforzar).
2. Retire el material aislante o cualquier otro obstáculo que se encuentre a una distancia de 150 Mm. del bastidor.

Haga las conexiones eléctricas como se indica a continuación:

- A. Desenchufe el conector hembra de 3 patillas, 230/240v 50/60Hz, del casquillo de la bombilla.
 - B. Conecte los cables al conector de 3 patillas, 230/240v 50/60Hz, a la red eléctrica.
 - C. Vuelva a conectar los enchufes macho y hembra.
4. Coloque la bombilla específica en el casquillo de la bombilla como se muestra (utilice sólo bombillas especificadas).
 5. Monte e instale el casquillo de la bombilla como se explica a continuación:

Cambio de la bombilla

Antes de cambiar la bombilla desconecte la alimentación eléctrica.

1. Deslice el casquillo de la bombilla interno desde el bastidor de montaje utilizando el reborde interno del casquillo.
2. Quite la tuerca de la parte posterior del casquillo de la bombilla rotándola en sentido contrario a las manecillas del reloj, como se muestra.
3. Una vez quitada, retire la placa superior para acceder a la apertura de la bombilla.
4. Retire la bombilla y rémplacela utilizando la bombilla apropiada especificada (deshágase de la bombilla según las normas específicas).
5. Deslice la placa superior nuevamente a su posición e instale la tuerca. Ajuste.
6. Deslice el casquillo de la bombilla interno de nuevo en su bastidor hasta que la unidad encaje en su posición.

ITA**Installazione**

Prima dell'installazione staccare le corrente.

L'installazione e qualsiasi intervento deve essere effettuato da un elettricista autorizzato.

1. Ritagliare un'apertura e fissare il telaio (A) alla parete come mostrato. Fare attenzione che le molle facciano buona presa contro la parete. Utilizzare un rinforzo in legno qualora siano necessari dei punti di fissaggio più solidi.
2. Rimuovere il materiale isolante o eventuali altri ostacoli nel raggio di 150mm dal telaio.

Effettuare il collegamento elettrico come segue:

- A. Scollegare la presa femmina a tre spinotti 230/240v 50/60Hz dal portalampada
 - B. Collegare il cavo principale nella sua posizione.
 - C. Riconnettere le prese maschio e femmina tra di loro.
3. Inserire la lampadina adeguata all'interno del portalampada (B) (come mostrato in figura).
 4. Assemblare ed installare il portalampada come descritto qua sotto.

Sostituzione della lampadina

Staccare la corrente prima di sostituire la lampadina.

1. Tirare sulla sporgenza del portalampada (B,C,D) per farlo scorrere all'interno del telaio (A).
2. Svitare e rimuovere le vite a galletto nella parte posteriore (C) del portalampada come mostrato in figura.
3. Fare scorrere e rimuovere la parte superiore per avere accesso alla lampadina.
4. Sostituire la lampadina all'interno del portalampada (B)(utilizzare a norma con il sistema di illuminazione)
5. Riposizionare la parte superiore (C) e fissarla nuovamente con la vite a galletto come nella posizione originaria.
6. Inserire e fare scorrere il portalampada(A,B,C) all'interno del telaio (A) fino a sentire uno scatto "push-click".

Installation

The installation of these products should only be carried out by a suitably qualified electrician in accordance with the instructions supplied with the product. All installation instructions can be downloaded from our website. We recommend that they are included with construction issue drawings and specifications.

Ceiling void depths for recessed downlights and linear luminaires: The Ceiling void depth should ideally be 25mm deeper than the overall height of the luminaire. When a fire-hood and/or a remote emergency pack is to be used, the void depth and space surrounding the luminaire will need to be increased.

Dimensions and specification

The drawings, dimensions and finishes of the products in this catalogue and any accompanying information are purely indicative. Great care is taken to provide up to date information in this publication, however, due to a continuing programme of design and development, we reserve the right to change these dimensions without prior notice. Please check the website for most up to date information. If a dimension is critical to the success of your project, please confirm it directly with the technical department. Throughout this publication, cut-out sizes refer to the aperture required when fittings are mounted in soft plasterboard. For fibrous tiles, timber, metal tiles and cast-in construction, check dimensions on site, or ask for a sample. Whitegoods reserves the right to discontinue any product in this publication at any time without prior notice.

Performance

All photometric data supplied is taken from a standard production luminaire tested under ideal laboratory conditions and may vary from data taken in alternative conditions. All calculated light levels and/or lighting plots provided are offered for guidance only. The customer must satisfy themselves that luminaires proposed are suitable for the application intended in all performance and physical criteria.

Temperature and physical environment

All products are tested with stated lamp wattage. Incorrect lamp types and wattages may effect efficiency, create glare and seriously overheat the luminaire. Adequate ventilation and free air space around fittings (in accordance with the installation instructions supplied with the product) will be necessary when used in confined spaces where elevated temperatures will occur. All luminaires are designed to operate in a maximum 30degree ambient temperature. Operating in ambient temperatures above this can affect performance and the mechanical functionality of the luminaire.

Intellectual property

In order that we can continue to develop innovative quality products, we believe it is of critical importance that we protect our ideas and visions. Therefore any infringement of our intellectual property will be vigorously pursued.

Returns

We cannot offer refunds on Custom or Tailored products, Standard product may be eligible for re-stocking within 3 months of original purchase date, subject to a 30% handling charge. All original packaging and documentation must be present and goods must be in original condition.

Service

Whitegoods will endeavor to fulfill all orders as quickly as possible and treat all customers with the highest regard. For further information about Whitegoods products and services, please visit www.whitegoods.com.

WEEE directive



The Waste Electrical and Electronic Equipment Directive (WEEE Directive) is the European Community directive 2002/96/EC on waste electrical and electronic equipment, together with the RoHS Directive 2002/95/EC which became European Law in February 2003, setting collection, recycling and recovery targets for all types of electrical goods. This imposes responsibility for the disposal of waste electrical and electronic equipment (WEEE) on the manufacturers of such equipment. To meet these targets Whitegoods has become a member of Lumicom to allow us to meet the current and future directives. For further information on the WEEE directive please contact our offices. WEEE Registration number is WEE/FG0362QY